

FIELD RESEARCH OPPORTUNITY

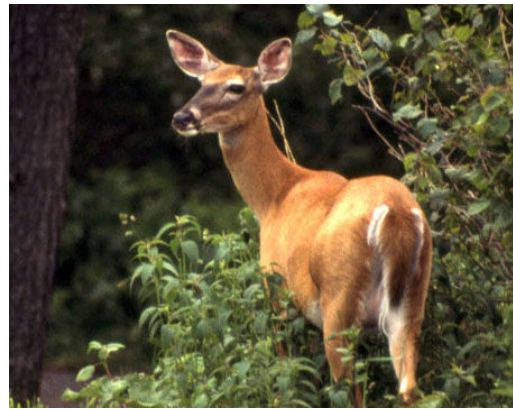
Estimate Deer Population Density

NYS Department of Environmental Conservation
and
SUNY College of Environmental Science and Forestry

Gain valuable experience with new wildlife research techniques and contribute to the DEC's effort to more reliably estimate deer density around the state. Currently NY State deer managers use the legal buck take per square mile and the Bowhunter Sighting Log Index to monitor trends in deer populations.

Although research supports this use, population trends have not been

compared to more rigorous estimates of the true population size due to logistical infeasibility. Distance sampling provides a cost-effective approach to estimating animal populations and is being conducted in selected regions around NY State. This fall, a team of 3 student volunteers is needed to conduct distance-based surveys of the deer population in wildlife management unit 7F (Syracuse region). Surveys take place around dawn or dusk, require about 3 hours each, and should be conducted 8 times between late September and early November. The DEC will provide all required equipment and reimburse mileage expenses. Academic credit is available for interested students.



To apply, send an email to Dr. Jacqueline Frair (jfrair@esf.edu) that indicates your major, academic rank (year), GPA, interest in the position, and contact information for a professional reference (preferably your advisor or another professor). Application deadline is 7 September 2007.