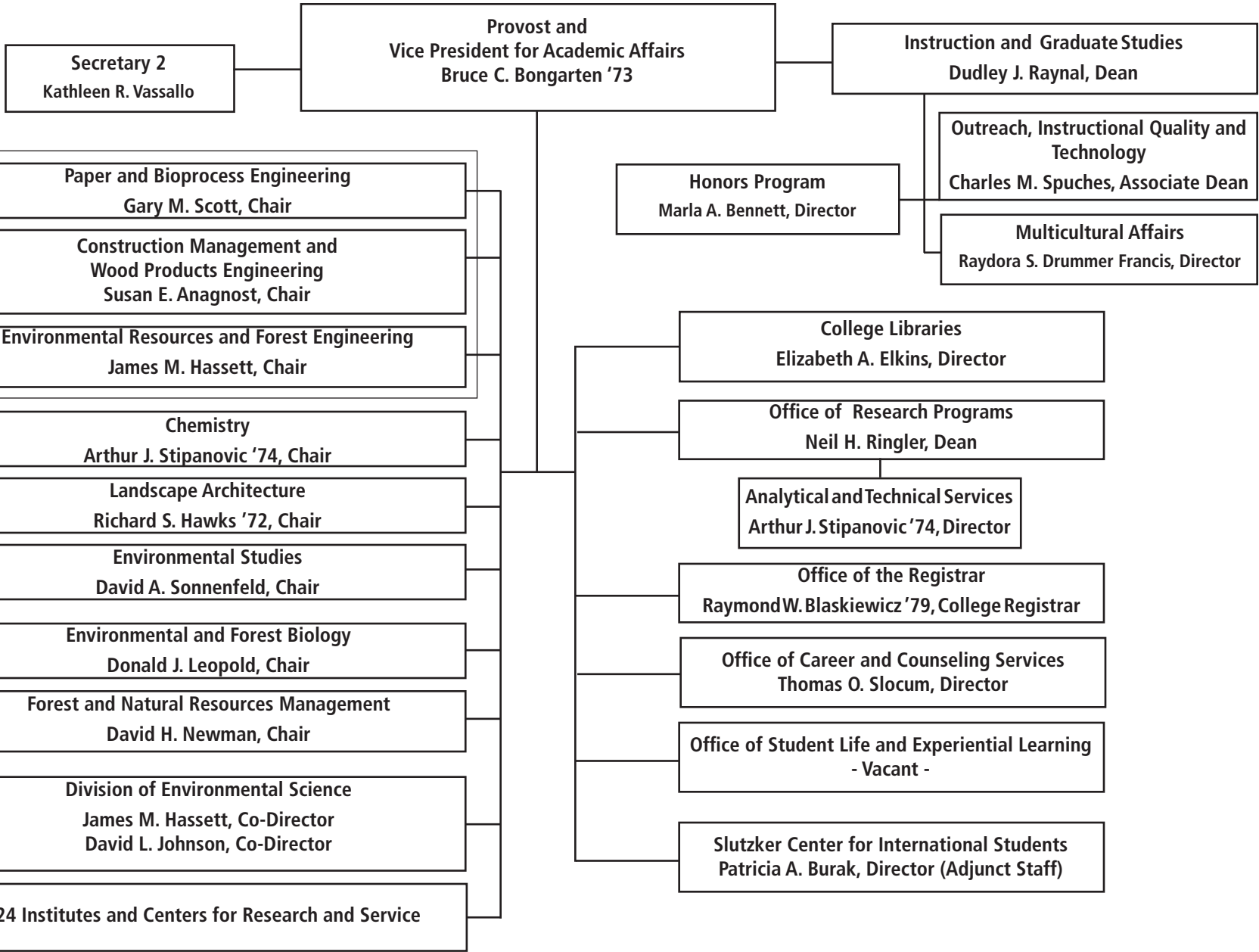


**SUNY College of Environmental Science and Forestry
Office of the Provost**



Division of Engineering

**SUNY College of Environmental Science and Forestry
Office of the Provost**

Provost and Vice President for Academic Affairs
Bruce C. Bongarten '73

Institutes and Centers for Research and Service

Environmental Systems Science

SUNY Center for Sustainable and Renewable Energy
To Be Announced, Director

Council for Geo-spatial Modeling and Analysis
Lindi J. Quackenbush, Director

SUNY Center for Brownfield Studies
Douglas J. Daley '82, Director

Great Lakes Research Consortium
Gregory L. Boyer, Director

Joachim Center for Forest Industry, Economy and the Environment
William P. Tully, Director

Center for Community Design Research
Cheryl S. Doble, Director

Adirondack Ecological Center and Roosevelt Wild Life Station
William F. Porter, Director

Council on McIntire-Stennis Forestry Research
Neil H. Ringler, Director

Randolph G. Pack Environmental Institute
Richard C. Smardon, Director

Council on Hydrologic Systems Science
Myron J. Mitchell, Director

Center for Native Peoples
Robin W. Kimmer, Director

Process Engineering

Renewable Materials Institute
George H. Kyanka, Director

Wood Utilization Service
William B. Smith '76, Director

Tropical Timber Information Center
Robert W. Meyer '67, Director

Empire State Paper Research Institute
Thomas E. Amidon '68, Director

Salix Consortium
Lawrence P. Abrahamson, Director

NC Brown Center for Ultrastructure Studies
Robert B. Hanna '71, Director

Biotechnology in Forestry

Central New York Biotechnology Research Center
John C. Fieschko, Executive Director

American Chestnut Center
Charles A. Maynard, Director

Council on Biotechnology in Forestry
William A. Powell, Director

Tree Pest Information Service
Vacant

SUNY Center for Applied Microbiology
James P. Nakas, Director

Polymer Science and Technology

Cellulose Research Institute
William T. Winter '66, Director

Michael M. Szwarc Polymer Research Institute
Israel Cabasso, Director