

2006 Graduate Assistant Colloquium Staff



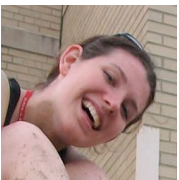
Nate Anderson is a second year PhD student and an RA in Forest and Natural Resources Management (FRNM). His research is focused on modeling the interactions between land ownership, land cover and land use in the Northeast, including the impact of forestland parcelization on wood-using industry. At SUNY-ESF, Nate has been a GA for Principles of Management and Integrated Resources Management, and was a NSF / ESF Science Corps Fellow.



Wendy J. Baltzersen is a PhD Candidate in Environmental and Forest Biology (EFB) studying wetland and avian ecology and conservation. She is originally from Arizona and completed a B.A. in Zoology from Oregon State University and M.S. here at SUNY-ESF in EFB. Wendy has been a GA for Ornithology, Wildlife Ecology and Management, and Wetland and Waterfowl Ecology and Management. Additionally she has co-taught a graduate level seminar in Landscape Ecology.



Katherina Bendz is a Ph.D. student in the Environmental and Forest Biology (EFB) Department. She received a B.S. in Biology, a B.A. in Chemistry and a minor in Geology from The University at Buffalo. Last year, she completed her M.S. in Biological Sciences at SUNY Binghamton University. During her first year at SUNY-ESF she was a NSF / ESF Science Corps Fellow This is Katherina's first year working on the Colloquium.



Ginny Collins is a PhD student in Forestry and Natural Resources Management (FRNM) specializing in Hydrology and Watershed Management. She received her BS and Masters of Engineering in Environmental Engineering at Cornell University. Ginny was the instructor for Engineering Hydrology and Hydraulics. This is her first year working on the Colloquium.



Coraline Falco is in the joint MS/MPA program, studying Forest and Natural Resources Policy at SUNY-ESF and State and Local Government Finance at SU's Maxwell School. She received her BS in Environmental Studies from ESF. Coraline has been a GA for Soil and Water Conservation Policy, Western Civilization and the Environment, and Natural Resources in American History. This is her second year working on the Colloquium.



Kay Hajek is a PhD student in Environmental and Forest Biology (EFB) studying ecology and conservation biology. She has been a GA for Dendrology, Marine Ecology, and Plant Physiology. Last year she served as a NSF / ESF Science Corps Fellow. This is her third year working on the Colloquium.

2006 Graduate Assistant Colloquium Staff



Chuck Spuches is Associate Dean for Outreach, Instructional Quality and Technology at ESF. He also is an adjunct associate professor at Syracuse University in Instructional Design, Development, and Evaluation. He teaches the Seminar on College Teaching at ESF. At SU he teaches classroom and online courses in educational project management and planned change and serves on doctoral dissertation committees in instructional design and adult education.



Sharon Weis provides administrative support to all areas of the Office of Outreach, Instructional Quality, and Technology. She holds a bachelors degree in sociology from St. Lawrence University. Prior to working at ESF, Sharon was a methods analyst with MONY (Mutual of New York) and worked extensively for the Liverpool School District. This is her seventh Colloquium.



Katie O'Rourke is a volunteering nut and has just returned from the wild wonders of Down Under. She is a junior in the Environmental and Forest Biology program. **Sarah Pallo** is a fun loving free creature of the earth in training. She is a sophomore in Environmental Studies and Communications. **Together**...we are trying to save the world. They spend countless hours in the best office on campus—the ESF Outreach office. They have been diligently working to ensure that you feel right at home with the Stumpies! If you would like to join our fabulous duo, please contact us through ESP (or email). Thank you and have a wonderful day.

Contact Information

Nate Anderson, Teaching Fellow, Forest and Natural Resource Management, nmanders@syr.edu

Wendy Baltzersen, Teaching Fellow, Environmental and Forest Biology, wjjenses@syr.edu

Katherina Bendz, Teaching Fellows, Environmental and Forest Biology, kabendz@syr.edu

Ginny Collins, Teaching Fellow, Forest and Natural Resource Management, ybcollin@syr.edu

Coraline Falco, Teaching Fellow, Forest and Natural Resource Management, cfalco@syr.edu

Kay Hajek, Teaching Fellow, Environmental and Forest Biology, klhajek@syr.edu

Chuck Spuches, Associate Dean, Outreach, Instruction Quality & Technology, cspuches@esf.edu

Sharon Weis, Administrative Staff Assistant, ESF Outreach, syweis@esf.edu

Katie O'Rourke, Work Study Student, ESF Outreach, kmorouk@syr.edu

Sarah Pallo, Work Study Student, ESF Outreach, sapallo@syr.edu