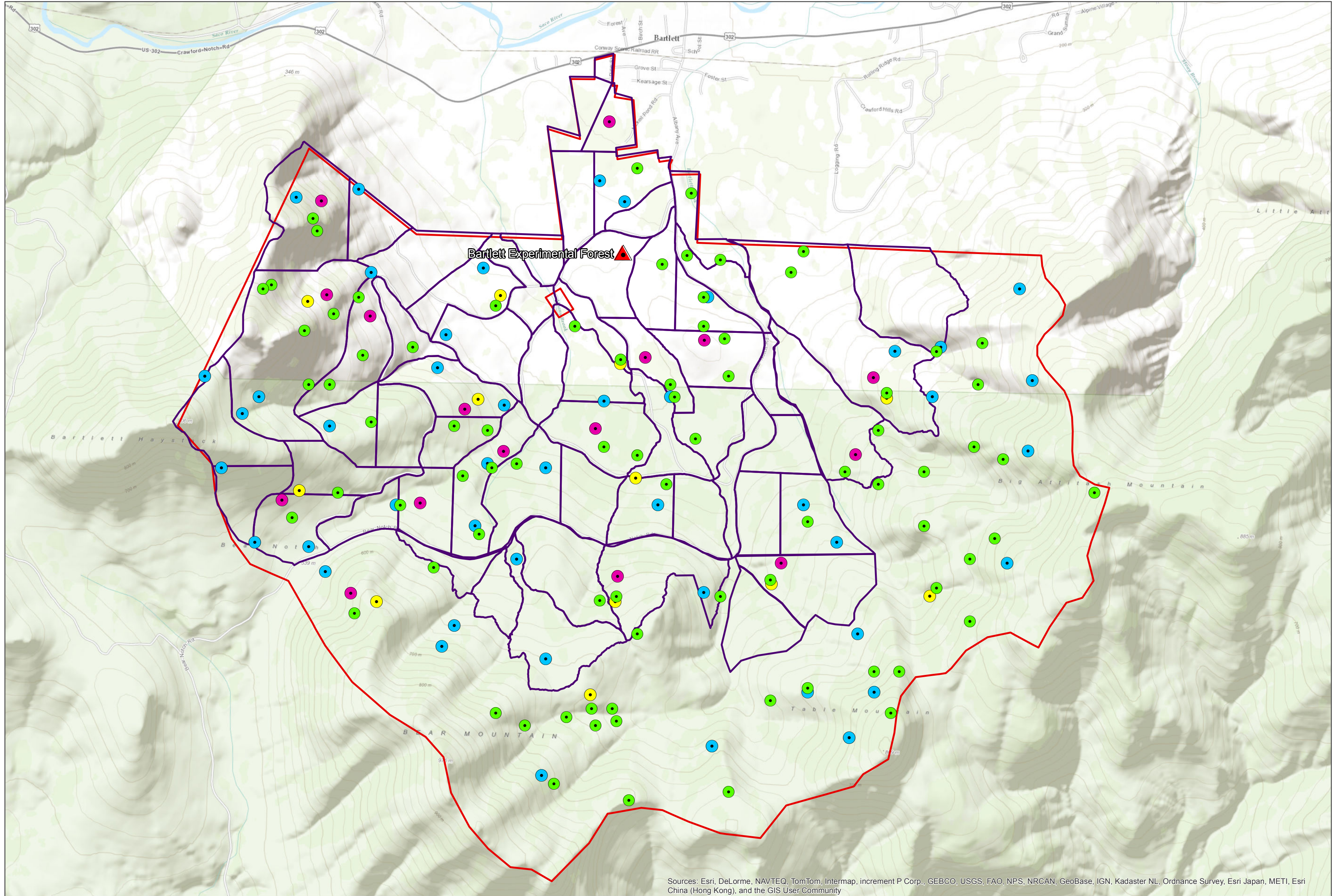
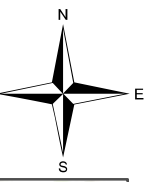


Bartlett Experimental Forest

Domain 1 - Northeast



Sources: Esri, DeLorme, NAVTEQ, TomTom, Intermap, increment P Corp., GEBCO, USGS, FAO, NPS, NRCAN, GeoBase, IGN, Kadaster NL, Ordnance Survey, Esri Japan, METI, Esri China (Hong Kong), and the GIS User Community

0 0.25 0.5 1 1.5 2 Kilometers

0 0.125 0.25 0.5 0.75 1 Miles

1:60,000 WGS1984 UTM Zone 18N - M. Slater 2/2013

- | | | |
|--|-----------------------------|---|
| | Candidate Relocatable Tower | Candidate FSU Plots - Sample Type |
| | Boundary | Birds |
| | Bartlett Compartments | Small Mammals |
| | | Ticks |
| | | Plants, Insects, Soil and Soil Microorganisms |



This product is for informational or planning purposes only and has not been prepared for, or suitable for legal, engineering, or surveying purposes. The National Ecological Observatory Network cannot accept any responsibility for any errors, omissions, or positional accuracy, and therefore, there are no warranties either expressed or implied which accompany this product.