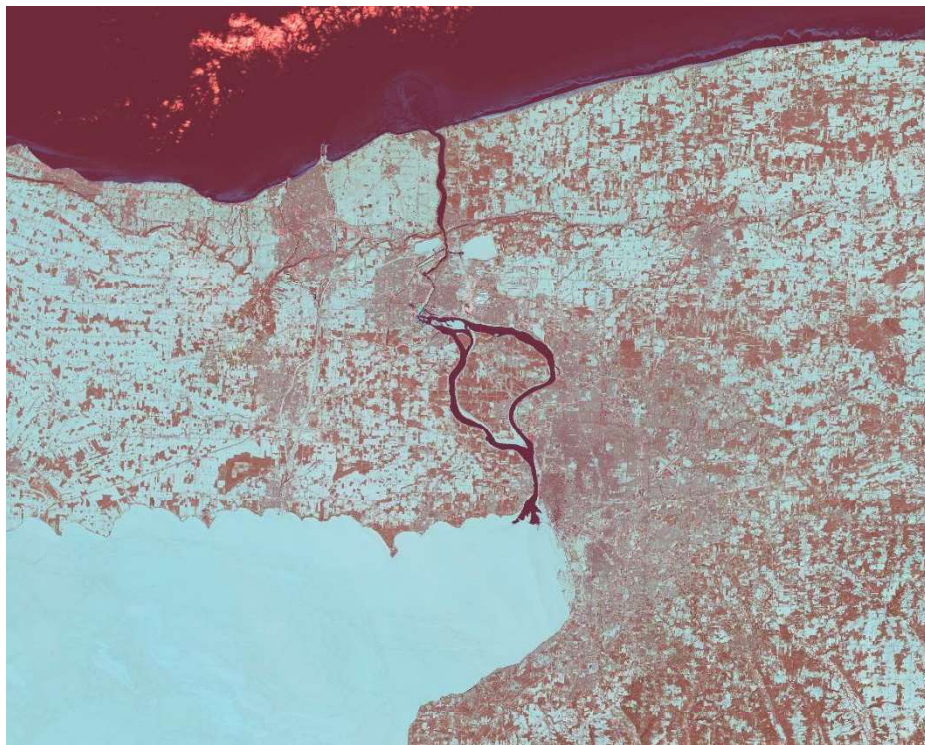


Using Landsat to View a Changing New York



Landsat 8, Path 17, Row 30, Band 7, 5, 3

Area near Lake Ontario, Buffalo, and Lake Erie, on February 17, 2014. These images are composited by shortwave infrared, near infrared, and green band. Lake Ontario is deep blue but Lake Erie is white because it was covered by ice and snow. Two reservoirs along Niagara River and most land appear as white as well.



Landsat 8, Path 17, Row 30, Band 7, 5, 3

Area near Lake Ontario, Buffalo, and Lake Erie on May 24, 2014. Ice and snow melted away. Lakes, rivers, and reservoirs are deep blue in this image. Vegetation appears as green and agricultural lands are red. High density urban areas in Buffalo and Niagara Falls are purple.



<http://www.esf.edu/nyview>