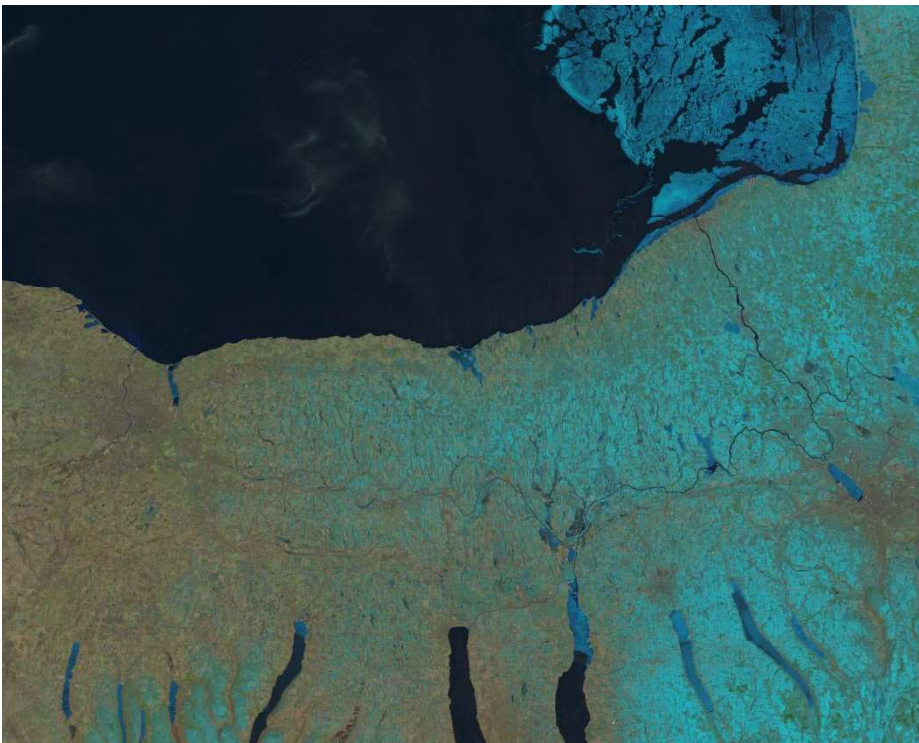


# Using Landsat to View a Changing New York



Natural color image of Lake Ontario acquired on April 04, 2010. All the places within the image are without ice and some places started to getting green which mean the plants started growing.

Landsat 5, Path 16, Row 30



This is Lake Ontario's data acquired on April 02, 2015. Most of the places is covered with ice and there is no sign of plant growth. 2015 had a much colder April than 2010.

Landsat 8, Path 16, Row 30



<http://www.esf.edu/nyview>