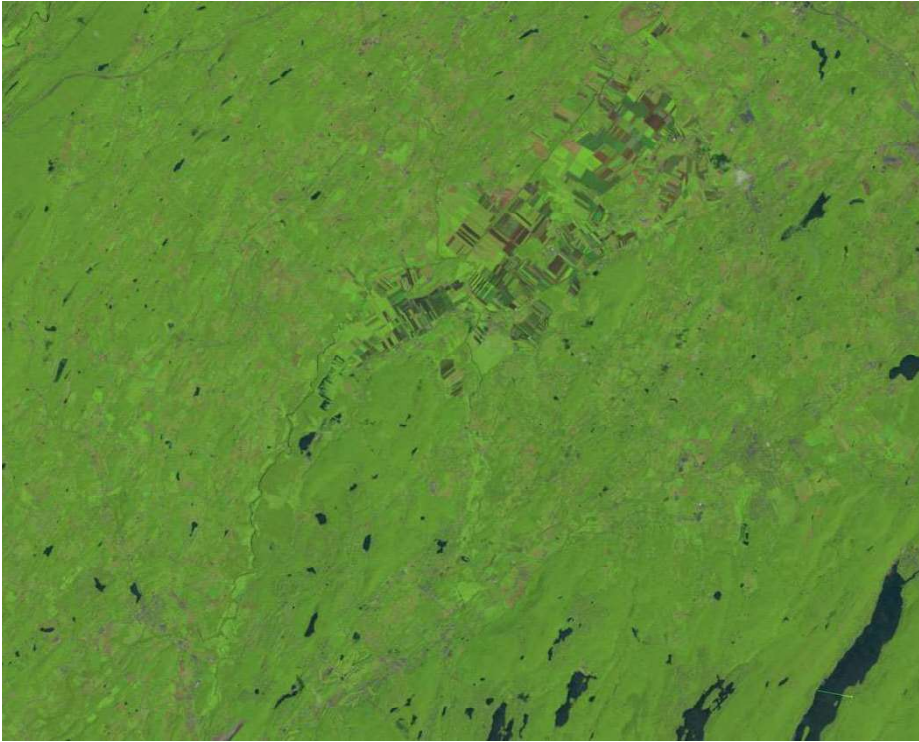


Using Landsat to View a Changing New York



Acquired in July 30, 2011, before Hurricane Irene, this image shows Wallkill River which crosses over an agricultural region in the middle of the image, west side of Florida, NY.

Landsat 5, Path 14, Row 31, Band 3, 2, 1



In August 31, 2011 after Hurricane Irene, this image clearly shows the Wallkill River flooded over their banks. These darker tones suggest potential flood damage to the crops in this region. Landsat images can be an important tool for monitoring damage to agriculture and help to make recovery plans.

Landsat 5, Path 14, Row 31, Band 3, 2, 1



<http://www.esf.edu/nyview>