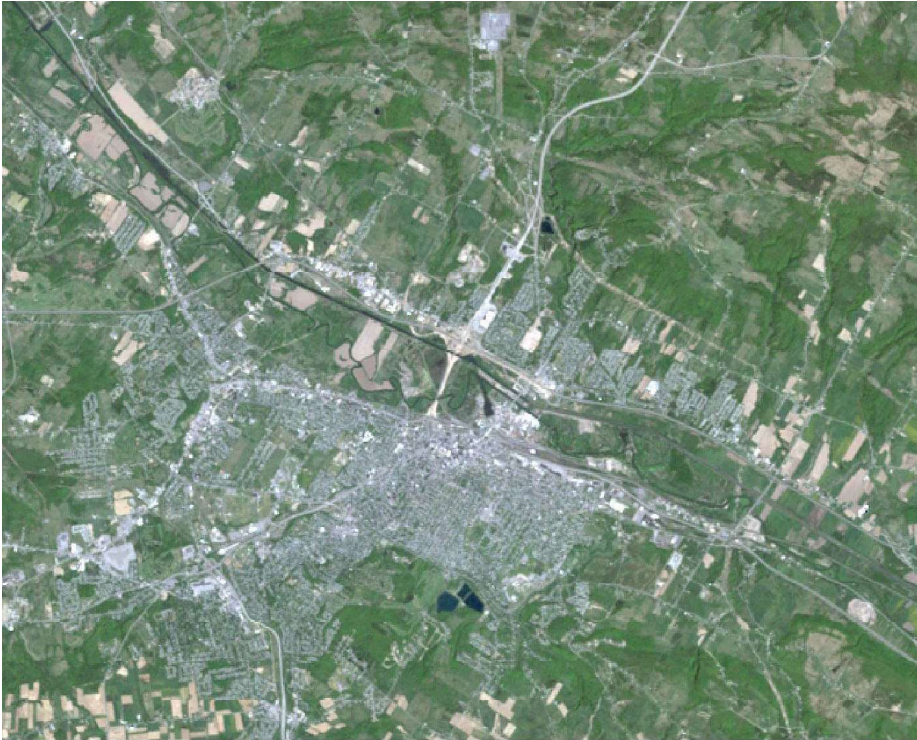
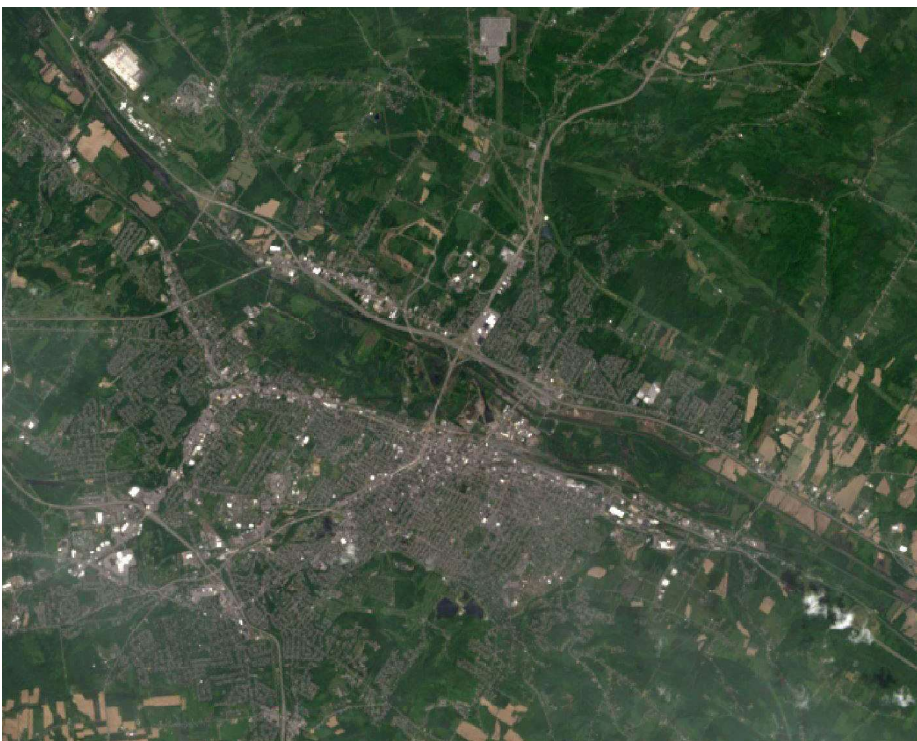


Using Landsat to View a Changing New York



Located on the Mohawk River at the foot of the Adirondack Mountains, Utica is the county seat of Oneida County, New York. This image was acquired in May 13, 1986.

Landsat 5, Path 15, Row 30, Band 3, 2, 1



Acquired in May 29, 2015 over Utica. The 40+ year archive of Landsat imagery provides a valuable tool for recording urban growth and monitoring the effects of urban growth on the surrounding landscape and ecosystems.

Landsat 8, Path 15, Row 30, Band 4, 3, 2



<http://www.esf.edu/nyview>