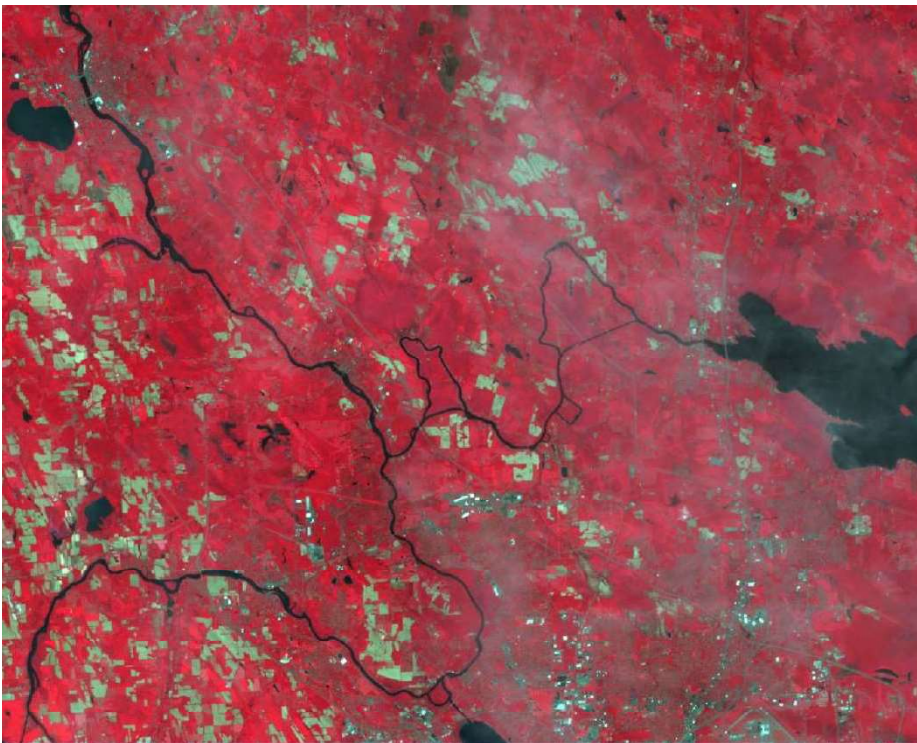


Using Landsat to View a Changing New York



Landsat 5, Path 15, Row 30, Band 4, 3, 2

This “false color” image acquired in May 13, 1986 shows the land use in west side of Oneida Lake. The red tones are due to a strong signal from Landsat’s near-infrared (NIR) band which is often used to monitor vegetation and forest areas.



Landsat 8, Path 15, Row 30, Band 5, 4, 3

Acquired in May 29, 2015, this image shows after 29 years of change to the landscape in west side of Oneida Lake. Landsat imagery is an important tool for monitoring change to the landscape over time.



<http://www.esf.edu/nyview>