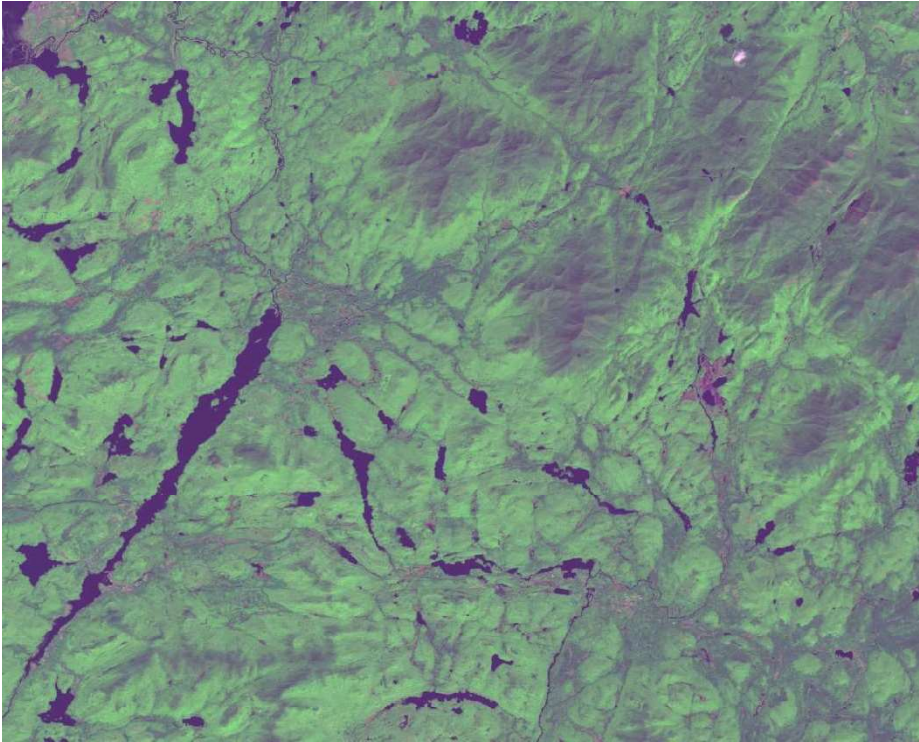
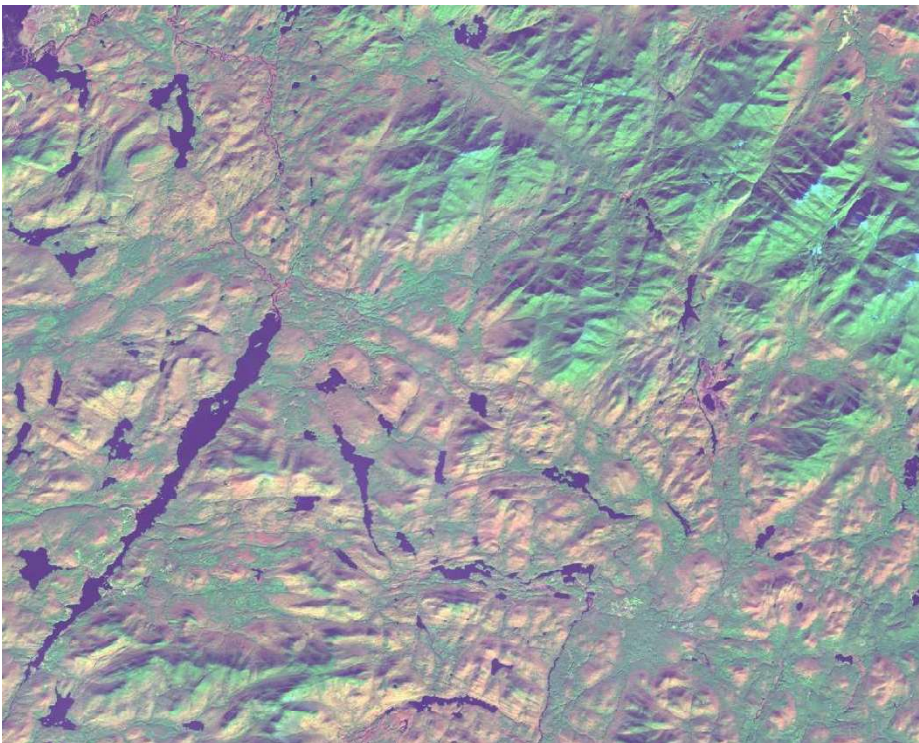


# Using Landsat to View a Changing New York



Landsat 8, Path 14, Row 29, Band 7, 5, 3

Area near Long Lake, High Peaks Wilderness, on September 8, 2014. These images are composited by shortwave infrared, near infrared, and green band. Forests appear as green, interspersed with lakes as deep blue.



Landsat 8, Path 14, Row 29, Band 7, 5, 3

Area near Long Lake on November 11, 2014. Deciduous forest appears as light brown because hardwood trees shed their leaves. The leaves of coniferous trees stay green all year round (evergreen), most located in higher elevation lands.



<http://www.esf.edu/nyview>